



### Remote Consultation Photos AUS, NZ & SG

---

Ashley & Martin would like to extend the opportunity for a remote consultation between patient and consultant. Before the consultation can take place, photographs are required for review of the current areas of hair loss and concern. Please email all photographs to the email provided by your consultant.

Before photographs can be taken, please ensure the hair is dry and without product of any kind. Please use adequate lighting, minimise clutter in the background and if possible, have the photographs taken by someone else to ensure quality.

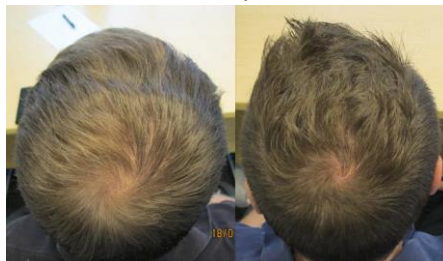
- 5 photographs are required at minimum;
  - Top
  - Forehead
  - Crown
  - Side (x2)
- Top – Photograph taken from above, head bowed & chin to chest.



- Forehead – Photographed from eyebrows up, do not crop sides or top.



- Crown – Photographed from behind, do not crop sides or front



- Side – Photographed from side (left & right), do not crop front or top.

